

Kee Access[®]

RELIABLE SAFE ACCESS



Modular accessibility ramps



KEE ACCESS® TICKS ALL THE BOXES

Access ramps come in a wide variety of styles, structures and materials. Kee Access® ramps present a number of advantages that eliminate the need to compromise.

- ✓ Quick and easy to precisely specify, price and install
- ✓ Requires minimal maintenance
- ✓ Conforms to all local safety standards
- ✓ More robust than wood, more flexible than concrete, more attractive than both
- ✓ Offers a range of styles, colours and options to complement the property
- ✓ Can be easily modified or adapted if circumstances change





Kee Access vs the rest

Steel, wood, concrete and aluminium are the usual materials considered for access ramps. Each has its own advantages and drawbacks. Kee Klamp® Fittings are galvanised to an industry standard and are a fundamental component of our access ramp solution.

Property	Kee Access	Wood	Concrete	Others
Simple specification	✓	✓	✗	✗
Easy to fit	✓	✓	✗	✗
Good surface drainage	✓	✗	✗	✓
Low maintenance	✓	✗	✓	✓
Easy to modify/repair	✓	✓	✗	Rarely
Low cost repair	✓	✗	✗	✗
Style and colour options	✓	✓	✓	Sometimes

RAMPS BUILT TO MEET LOCAL STANDARDS

Below are the four primary areas to consider when purchasing a ramp:



- 1. You must provide a ramp with the proper slope.** As a rule, the shallower the slope, the easier the access. The regulations for maximum slope vary according to where the ramp is installed. Here is a basic guideline*:

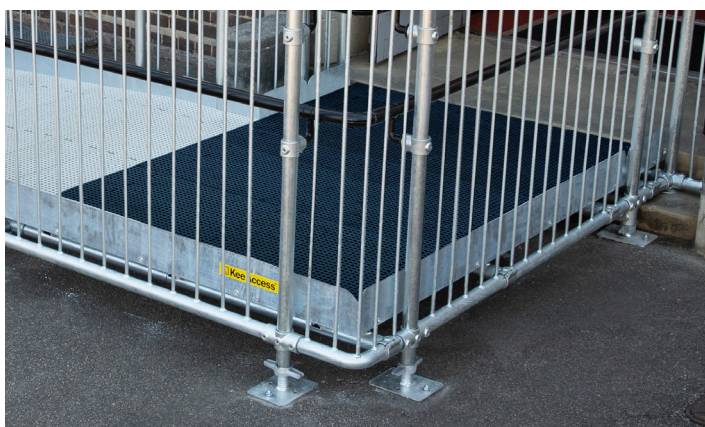
Public Access: 1:15

Dwelling Access: 1:12

* This is a simplified guide. The regulations have more nuanced gradient requirements depending on the length of the ramp between landings.



- 2. You must provide the proper clearance for navigation.** In the UK, 1200mm is a general figure that applies to the width of a ramp. This also applies to the available space on a landing, clear of any door swing paths.



- 3. You must provide a flat landing for long distances and changes in direction.** Any time a ramp changes direction, a flat landing needs to be in place. Additionally, for a 1:15 slope, a landing must be provided every 5m.



- 4. You must provide the proper grabrails and guardrails on the ramp.** Grabrails must be smooth, continuous, and not cold-to-touch. Guardrails, where required, should be a minimum of 1100mm in height.

These are the basic guidelines and considerations. There are more detailed regulations that our technical team will consider when finalizing the design of any ramp.

QUESTIONS ABOUT KEE ACCESS

Q: How quickly can it be delivered and installed?

A: Because our ramps are built with standard Kee Klamp® components, stock availability is generally not a problem. Once the purchase order is received, delivery can be arranged within days. A simple ramp can be fitted within a day. More complex structures for commercial use might take up to a week to install.

Q: What options are available?

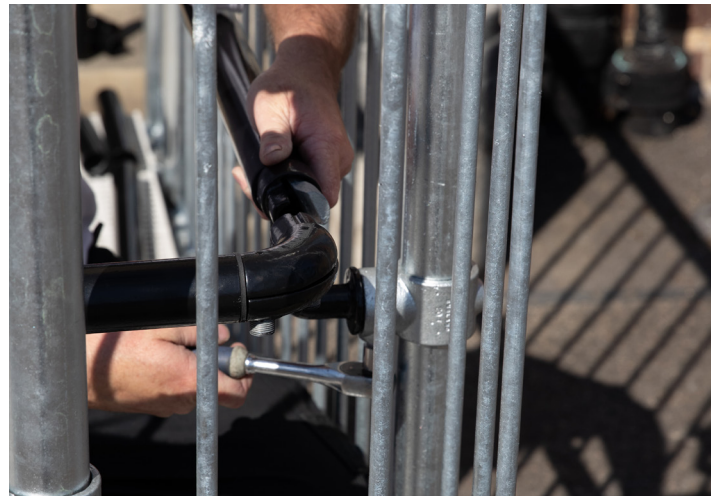
A: The railing can be colour matched to the property to complement classic or contemporary structures. The ramp is available in two width sizes (1200mm and 1500mm) to meet a variety of compliance options. Extra safety and convenience include colour contrasted floor panels, a middle “child” rail option and a stair module.

Q: How can I be sure users will be safe?

A: Kee Access® has been designed and created by professional engineers and is backed by a global network of support. Rigorous testing to standards around the world has been completed in our internationally recognised test centre. Additionally, the Kee Klamp® fittings that make up Kee Access® have a long track record of protecting people and stopping accidents.

Q: How much maintenance is required?

A: Much less than wooden or concrete structures, and in many cases less than other metal ramps. Kee Access® is made from galvanised steel – this protective coating prevents rust and kills moss. The anti-slip ramp surface has integrated grit and drainage holes to prevent the build-up of water and ice.



THE PARTS THAT MAKE KEE ACCESS SO SECURE



Kee Klamp fittings – Kee Access ramps use tried and tested Kee Klamp fittings for construction



Handrail – Smooth, continuous, powder coated handrail that is not cold to the touch



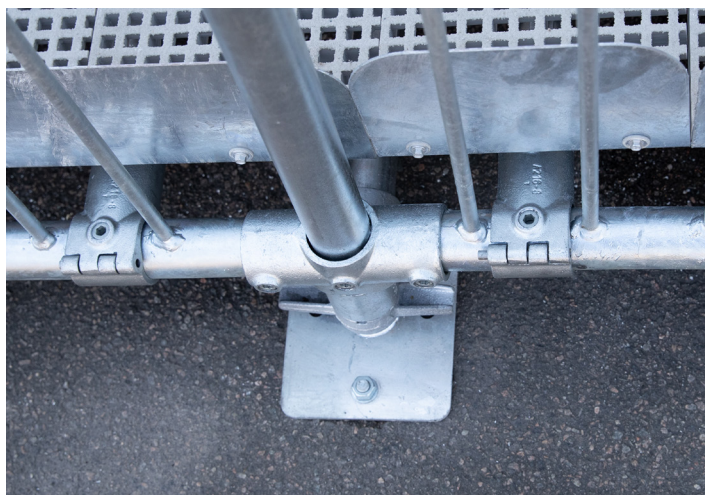
Vertical bar infill panels – Anti-climb, galvanised premium infill panel



GRP walkway – Anti-slip mini mesh makes the ramp suitable for all weather conditions

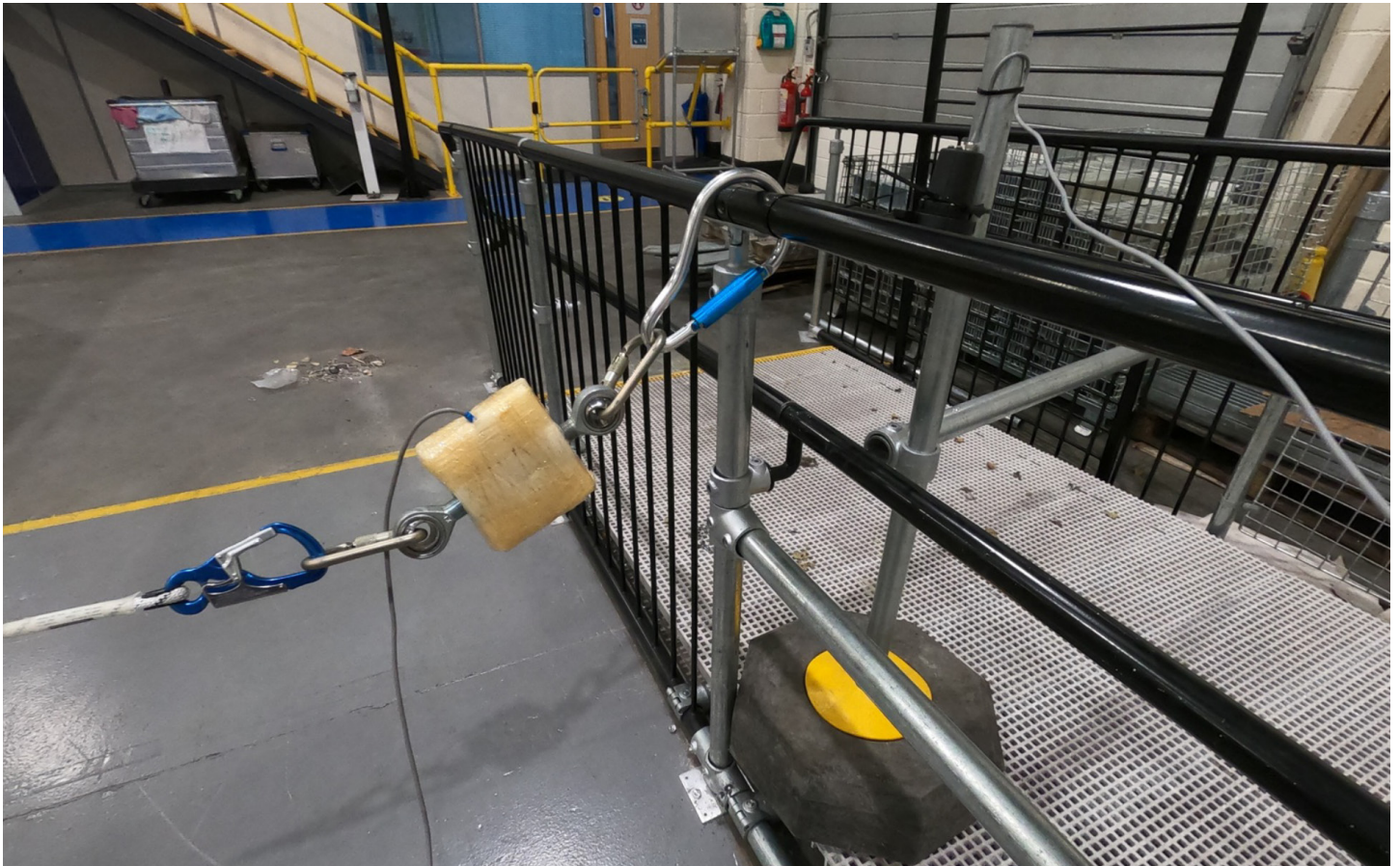


Upstand – Edge guard that guides the user around the access route



Load bearing feet – adjustable on site to accommodate most substrates

SAFETY RECOGNISED AROUND THE WORLD



Kee Safety is a global provider of fall protection and safe access products, systems, training and consulting. Established in the UK in 1934, the range has expanded from our original Kee Klamp product into a portfolio of safety equipment.

We provide the highest level of safety solutions and products to every industry and niche around the world. No project is too big, no safety requirement too small.

Advanced testing facility

As the continued evolution and development of new product standards drives compliance across the globe, Kee Safety has ensured it remains at the forefront of global innovation by creating one of the world's leading test and training centres at its UK Head Office.

Run by a team of industry experts, this state-of-the-art facility ensures Kee Safety meets the needs of its customers, provides them with fully compliant products, and drives new innovation with the purpose of separating people from hazards.

The layout of the facility allows walls and roof structures to be built to mirror actual installations. This real-world testing gives clients total peace of mind as to exactly how the products will perform when installed. All tests are filmed, so Kee Safety has a visual record of performance in each environment and the test parameters to which an installation was subject.



Kee Safety LLC
Dubai Investment Park (DIP)
Near Green Community
PO Box 18448
Dubai
United Arab Emirates

Tel: +971 (0) 4885 9066

Fax: +971 (0) 4885 9065

Email: uaesales@keesafety.com

Web: www.keesafety.ae